



FUNNEL SLIDES

Technical Information

Type	Body and raft slide
Water volume	120 m ³ /hr 360 m ³ /hr
Capacity	100 pers./hr 200 pers./hr
Incline	15 – 35%
Level	Red, black
Age requirement	8 years
Safety run-out	see page 63

Versatility sliding pleasure and unforgettable impressions

Short Description

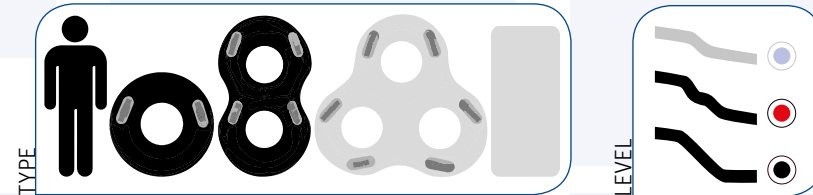
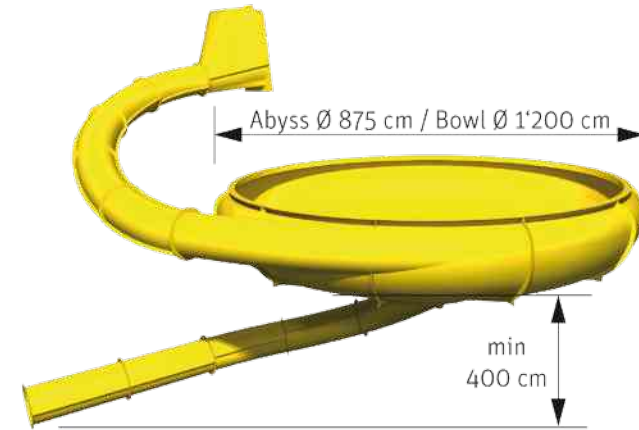
The Abyss and the Bowl – funnel slides from Klarer

Klarer's funnel slides offer flexibility and excitement. Different sections give riders a varied sliding experience with multiple special effects. After sliding down a steep tube slide, the rider enters the imposing funnel cone. Depending on speed, the slider spins around two or three times before being pulled through the funnel base towards the exit chute where the next tube segment carries the rider safely into the landing pool.

The funnel slides can be used as a body slide or with rafts and offers medium or high difficulty levels. The names of the two slides indicate their use: the Abyss, named after the classic James Cameron film from 1989, is a body slide, while the Bowl is used with rafts.

Sliding fun with a variety of spatial and visual effects.

View



Galaxy, Therme Erding, Germany



Lido Locarno, Locarno, Switzerland



Acquaworld, Concorezzo, Italy



Freizeitbad Cham, Cham, Germany



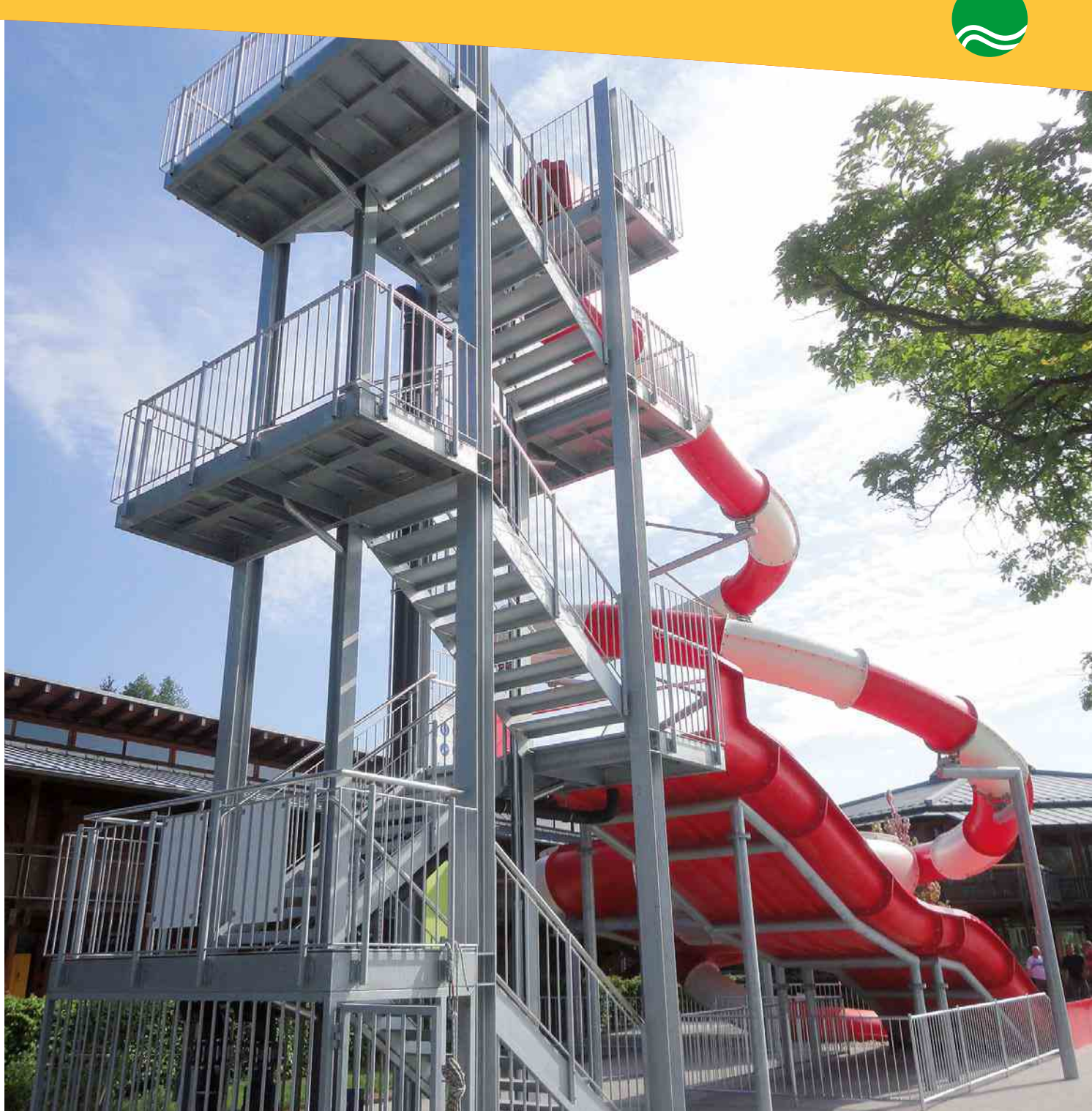
STAIRS

This Way Up

An important component of any water slide are the stairs. Comfort and the use of quality materials are important characteristics that directly impact the user's impression and the lifespan of the facility.

Our selection of stairs include spiral staircases, straight stairs and completely ready to use slide towers. Our expertise and experience work together to produce high quality staircase elements.

Whether a simple spiral staircase or a ready to use slide tower, we are the right contact for a safe way up





RUN-OUTS

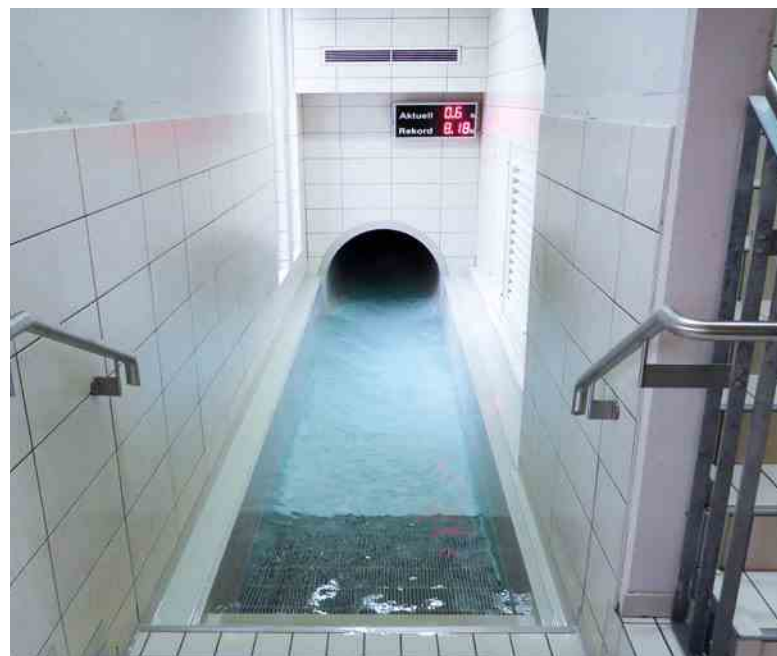
... Systematic and Secure

Our run-out systems have been designed and developed to meet a wide variety of requirements. We offer the right run-out system for all types of water slides, guaranteeing compliance with all norms and meeting the highest safety standards. The run-out can flow into an existing pool or be installed as a stand-alone landing pool.

Maximum safety combined with the highest level of comfort, impeccable product quality and attractive design are what we require of our run-out systems. If you do not find what you're looking for among our standard models, we are happy to develop a personalized run-out system to meet your special needs and requirements.

Each of our water slide models has a recommended run-out system, which is noted in the product descriptions.

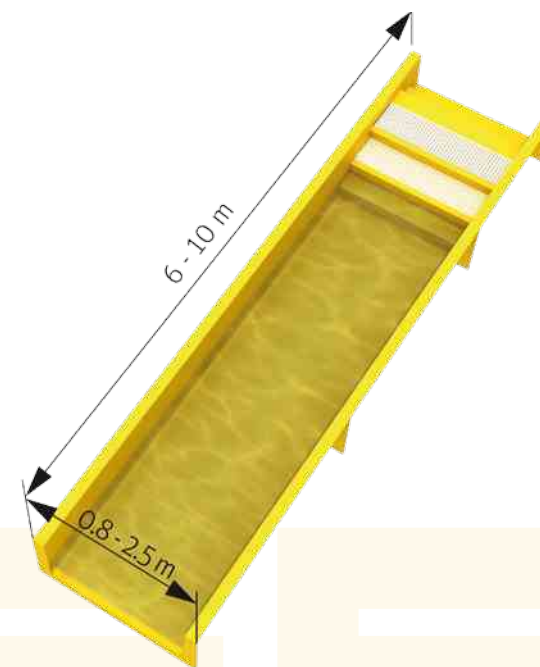
We offer expertise and years of experience to support you in planning your leisure facility



1 UNIVERSA

The Versatile Solution

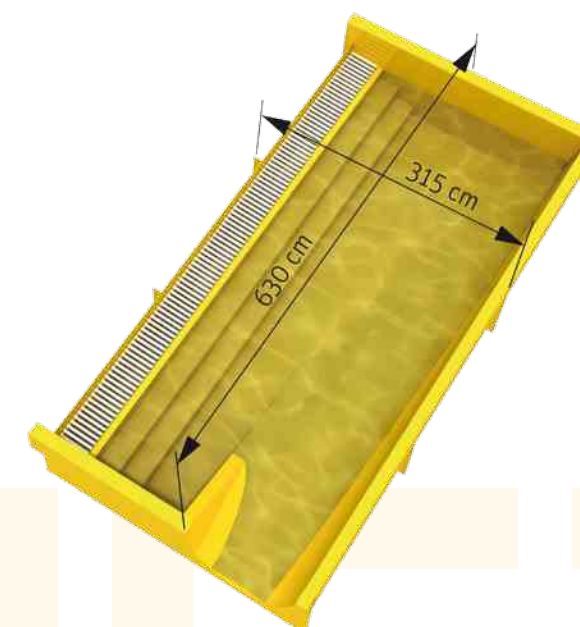
The Universa is the all-around solution for your run-out system needs. Whether open or enclosed, indoors or as an outside extension, this system can be used in almost any situation. The run-out system can be installed in-ground or above ground. Guests use the integrated stairs to exit the pool.



2 SOFA

The Comfortable Option

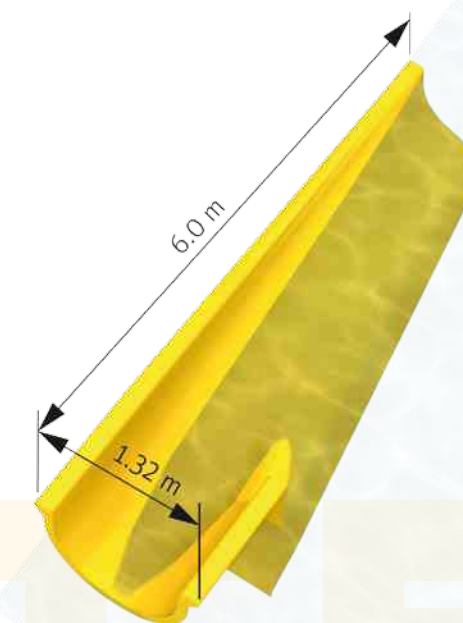
The Sofa run-out offers maximum safety with the highest possible level of comfort. This run-out can be installed in-ground or above ground. Guests use the integrated stairs to exit the pool.



3 SOFA SPECIAL

The New One

The Sofa Special run-out offers a soft landing into an existing pool. The guest is carried securely from the sliding area into the run-out pool, helping to avoid collisions in the landing area. The Sofa Special run-out meets the newest safety requirements and replaces older drop-off run-out systems.





SAFETY

Safety First

Water slides are a type of sports equipment that must be built and operated so that the possibility of injury or other damage to personal health is eliminated when the equipment is used properly. Legal norms as defined in regulation EN 1069 parts 1 and 2 define safety requirements for the planning, construction and operation of water slides as well as presenting regulations for their documentation and safety certification.

The safety of our guests is our highest priority. We offer a wide variety of instructional materials and safety systems to ensure the secure operation of the water slide. Our safety systems have been developed to operate under extreme conditions.

SECURITY CERTIFICATION

Tested and Approved

Before a water slide can be operated, it is thoroughly tested and approved by the TÜV Technical Inspection Association according to legal norms and safety requirements. The certification report and the operational instructions prepared by Klarer Freizeitanlagen AG contain all important information for a secure operation of the water slide.



INSTRUCTIONS

Rules of Use

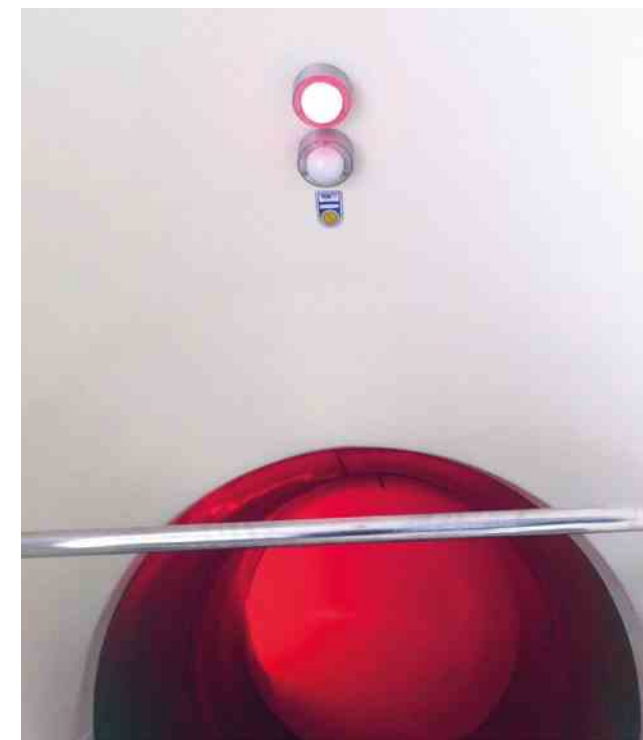
Basic instructions are a standard requirement for every water slide and contain important safety information as well as rules of conduct for users. Our safety systems encourage guests to follow these rules.



START LIGHTS

Time-Interval or Sensor-Activated

The lights control the slide frequency of guests. A time-interval light system signals green on a pre-set timer, the sensor-activated light system opens the water slide when the guest has passed the pre-set point along the water slide route. This lighting system can be built into the initial slide segment or installed as an add-on system.



TURNSTILE ENTRY

Providing the Highest Security Standards

The turnstile stops unwanted entry to the starting area and meets safety requirements for high-speed water slides. The turnstile is opened only once the guest has left the landing pool through a second turnstile.



CCTV SYSTEMS

Ensuring Safety

This video system with real-time images allows monitoring of the start and/or landing areas. The system allows visualization and preservation of evidence in cases of illegal or improper use of a particular water slide. CCTV systems help to identify potentially dangerous situations and reconstruct the sequence of events in case of an accident.





What we can do for you

Are you interested in installing a new water slide?

Whether you are a first-time user or an experienced expert, if you are looking for a simple children's slide or planning a complete waterpark - we are here to guide you through the process. We know the market, recognize the latest trends and have the necessary expertise and experience to make your project a success.

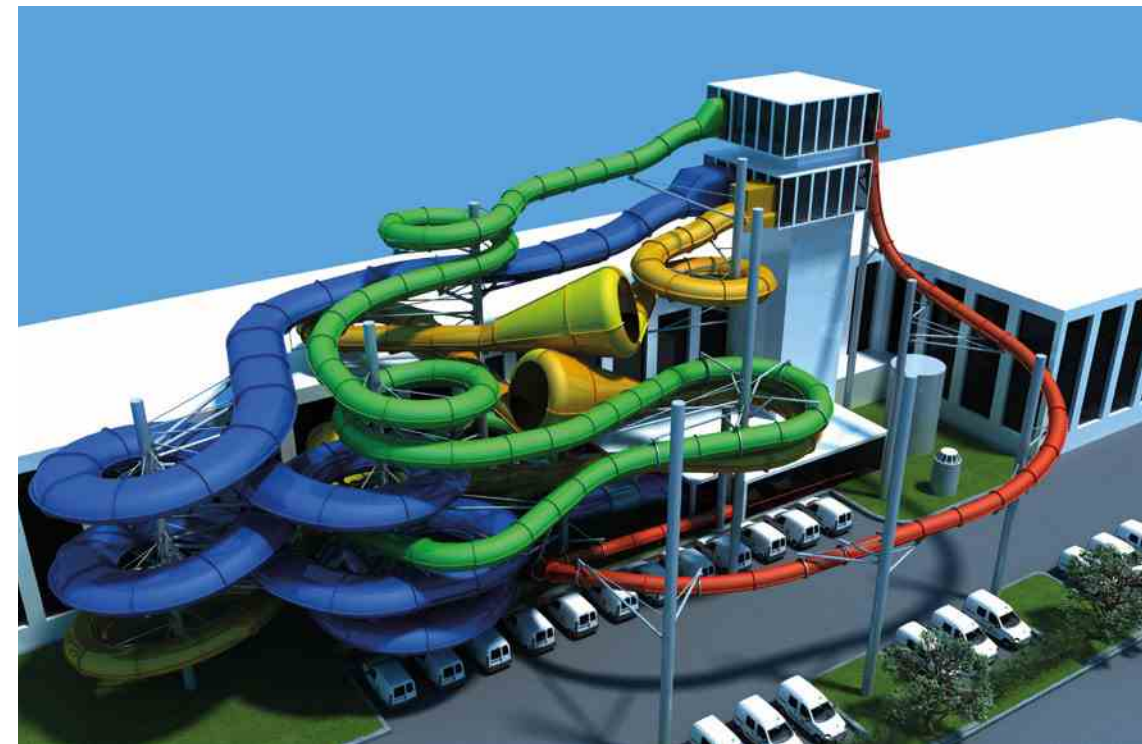
Concept and Planning

Give us a call. We are here to help you!

Share your vision with us. We use your basic planning documents to create a three-dimensional drawing of your idea and can provide either a general estimate or more detailed offer. Thanks to modern CAD technology, you have a realistic idea of how the new water slide will look and fit into your leisure park from the earliest stages of the planning process.

We are also happy to visit you on-site to discuss your plans. Just contact us to set up an appointment. We not only build water slides, we provide you with complete service from beginning to end, including thorough product explanation and concept development with careful planning and cost control. (See page six for an example of a client concept with three possible expansion stages.)

Since the very beginning of our company, our goal has been to pass on our own joy and enthusiasm for water slides to our clients and their waterpark guests





Our Company

Klarer Freizeitanlagen AG is a traditional family business with headquarters in Hallau, in northern Switzerland. Surrounded by vineyards in the Klettgau Region, we have designed and produced water slides and water amusements for clients from around the world for more than thirty years. Armin Klarer, company founder, has now handed over the reins to his two children, Claudia and Stefan. A young, dynamic team of motivated experts will support you from the initial consultation until installation is complete. In addition to our home team, our many agents located throughout Europe are also ready to help.

Our Promise of Quality

Quality and value retention are important decision criteria for our clients in Europe. To meet this need, we maintain high quality standards and invest the necessary time in careful planning to ensure that your water slides continue to attract customers for many years to come. The knowledge and experience of more than three decades flows into the planning of your project. Regardless of space limitations, we create a cost-effective concept tailored to your target audience.



S. Klarer

C. Klarer

system klarer



Klarer Freizeitanlagen AG
Dickstrasse 4 | 8215 Hallau | Switzerland
Phone +41 52 687 06 06
Fax +41 52 687 06 00
info@klarer.com | www.klarer.com

You Tube



Acquaworld, Concorezzo, Italy