



In this edition

Acquaworld

Page 2



A new dimension for Italy

A water park with an area of some 35,000m² and more than a kilometer of water slides designed by Klarer Freizeitanlagen AG.

Magic Tube

Page 5



Product enhancements

The Magic Tube, a smaller version of the highly successful Magic Eye®, requires less space but gives guests an optimum fun factor.

Racer Slide

Page 6



Formula 1 racing for your water park

Bring the racing spirit to your water park! Competitions, time trials and daily speed records offer park visitors a variety of fun experiences.

Renovation

Page 8



An economical solution for existing slides

Adding an insulating shell improves the look while also saving energy and lowering costs.

Editorial



Thirty years ago our family-owned company designed, developed, produced and installed the first water slide in the city of Wil, Switzerland. Ten years later, Klarer Freizeitanlagen AG was founded and has become one of the leading companies in the marketplace. Today we proudly present customer references from around the world. For us, being a market leader means recognizing new trends before they emerge and continuing to innovate and develop our products to meet our customer's needs. Product development, production and testing of our latest products to our high standards of quality take place in our headquarter in Hallau, Switzerland. Spectacular, new and unique water slides are developed here annually, such as a loop water slide installed in Plettenberg, Germany or the ski-jump style slide developed for a water park in Deggendorf, Germany. Using the latest CAD technology we are able to produce realistic, three dimensional design images showing the final placement of the new waterslide within the existing facility layout even in the early stages of planning. Long-term partnerships with a team of trusted contractors allow us to complete even the most complex projects smoothly, without unwanted surprises.

Since the very beginning of our company, our goal has been to pass on our own joy and enthusiasm for water slides to our clients and their water park guests. Contact us to catch the vision. We look forward to hearing from you!

C. Klarer S. Klarer

Claudia and Stefan Klarer
Klarer Freizeitanlagen AG

Acquaworld Concorezzo

A New Dimension for Italy



Acquaworld Concorezzo – Italy's largest indoor water park – celebrated its grand opening in 2011. Waterslides from the Klarer company, with a total length of more than one kilometer, guarantee visitors an unforgettable sliding experience.



Most spectacular indoor water park in Italy

Located just outside of Milan, Acquaworld, the largest and most spectacular indoor water park in Italy, opened its doors on 1 July 2011. Acquaworld Concorezzo covers an area of about 35,000m² and guarantees guests the ultimate water-fun experience. The park, which can accommodate up to 1,500 guests, is made up of more than twelve indoor and outdoor pools including a dedicated spa area.

Theme areas

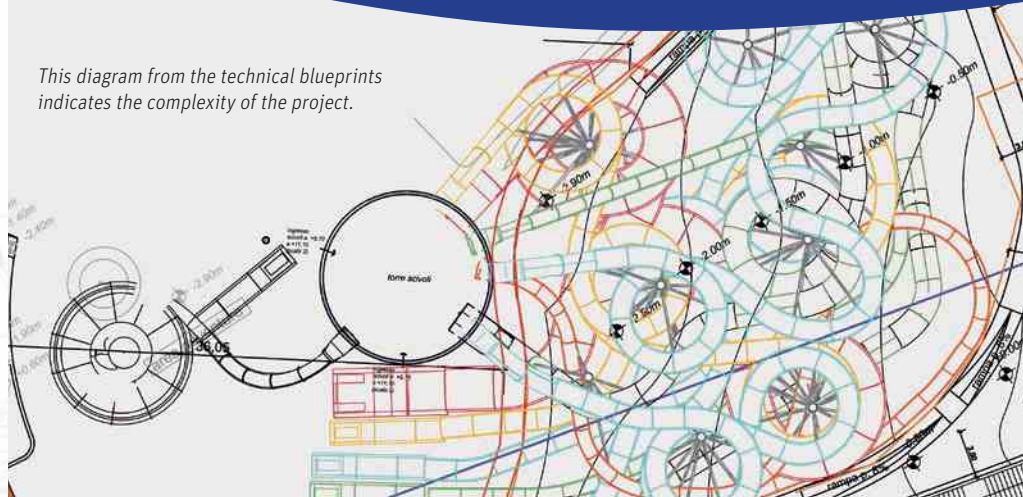
Various theme areas provide everything from relaxation to fast-paced action suitable for all age groups. "Fun World" has its own lagoon with a waterfall, a wave pool and a flowing river. The outdoor area offers an inviting alternative on sunny days. The lovingly furnished children's area contains special surprises for our youngest guests. "Relaxing World" invites visitors to unwind in one of the saunas. "Adventure World" offers guests over one kilometer of water sliding excitement.

Out of all the companies bidding for the Acquaworld contract, Klarer Freizeitanlagen AG rose to the top with innovative ideas and references from satisfied customers. Nine different water slides provide an unforgettably exciting water-sliding experience for everyone from families to thrill-seekers.

Acquaworld is a water park that presents the standard attractions in a new and innovative way. The waterslide experience rises to a new level of fun through variable sliding routes and slopes as well as different sized sliding tubes and tunnels which combine to offer the guests a multi-faceted adventure. Visual effects increase the impact while large inner-tubes allow multiple riders at one time.

The main challenge during the four-month planning phase was to develop the most attractive waterslides and place them in a compact area. The five-month production phase was marked by a series of firm deadlines that needed to be met in order to allow a seamless transfer into the installation phase. During the final five-month set-up phase, some 65 tons of steel were assembled and over 400 individual elements were pieced together in the tight quarters of the construction site. After more than a year of planning, production and assembly, the project was

This diagram from the technical blueprints indicates the complexity of the project.



«In every aspect satisfied with Klarer's planning and their realization» | Interview with Valentino Tomasoni, CEO Bluwater S.p.a.

How did you get the idea to build Acquaworld Concorezzo and what was your reason for it?

The idea was born in 2006. At that time there wasn't anything like Concorezzo in Italy, whereas in the rest of Europe similar parks had already been installed years ago. We believed that the time had come for Italy to also have a large indoor water park.

What was your biggest goal and challenge in planning the adventure world of Concorezzo?

Our goal and challenge was to devote one zone of the park entirely to emotional excitement and adventure by installing a great variety of slides.

What made you want to work together with Klarer Freizeitanlagen AG for the

construction of the water slides?

We chose Klarer Freizeitanlagen AG because we believe them to be the leading company in Europe in the production of high quality slides.

Were you satisfied with the planning, processing and construction done by Klarer Freizeitanlagen AG?

In every aspect we were satisfied with Klarer's planning and their realization of our project.

What was the highlight of your collaboration with Klarer?

The absolute highlight was when we first tested the slides. We saw how our dreams had become true and all the ideas and plans of years had been excellently put into practice.



Acquaworld – Specifications

Size	Indoor Area 35,000 m ²
Capacity	1,500 park visitors and a slide capacity of more than 2,300 people per hour
Slides	2 Black Hole enclosed slides – 169 m / 155 m 2 Magic Tube slides – 173 m / 160 m 2 Turbo Slides – 100 m / 81 m 1 Magic Eye® Slide – 158 m 1 Abyss® funnel slide – 62 m 1 wide-format children's triple slide – 12 m

completed on time. The water park was turned over to the local owner ready for use in early 2011.

Water slides increase the attractiveness of any leisure facility, and in turn raise the number of visitors. This kind of investment pays for itself in no time.

From relaxation to full-speed – Acquaworld Concorezzo, Italy has it all. Here's wishing you lots of sliding fun from Klarer Freizeitanlagen AG!





Magic Tube

Magic Eye® in a Compact Space



Klarer Freizeitanlagen AG is constantly enhancing their product line to meet the needs and expectations of our customers. We are pleased to present the Magic Tube, one of our current innovations.

Klarer Freizeitanlagen AG not only sets its course with innovative products, but strives to continually meet customer demand by further expanding their product portfolio. The newest of these is the Magic Tube a smaller version of the highly successful Magic Eye®.

A major concern for many leisure facilities today is the limited available space for new attractions. The Magic Tube, with a width of only 1,60m and a height of 1,40m, is a compact version of the Magic Eye®. It can be used for body sliding and on single or double inner tubes. Components are also

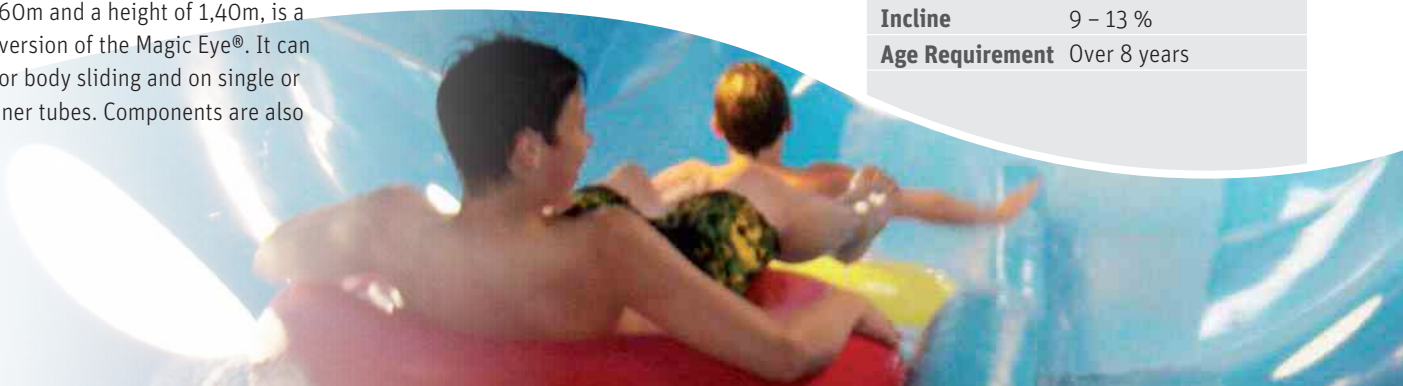
available with translucent effects and can be combined to create a variety of individual water slide formats. An open version, the Magic Slide, is also available, and last year alone over 600 m of Magic Tube slides were converted.

Let our professional consultants help you find the perfect solution to suit your leisure facility.

Magic Tube – Specifications



Dimensions	160 x 120/140 cm
Capacity	240 Pers./Hr.
Water Volume	270 m³/h
Incline	9 – 13 %
Age Requirement	Over 8 years





Klarer Racer Slide

Formula 1 Racing for your Water Park

The new Racer Slide gives riders a high-speed thrill! How fast can YOU go? Keep trying to find the best position for maximum slide as you go for your own record time. Fathers race their sons, mothers compete against daughters, friends slide in a neck-and-neck race: Are you ready to race?



The ultimate racing experience

You're in the starting gate, your adrenaline level begins to rise... 3 - 2 - 1 - GO!! The light turns green and the race begins. The quickest start, the optimum sliding position and the best line in the curves will make the winner. Every second counts as you enter the final curve, focused on the finish line ahead. You win ... but yours is not the best time of the day. Time for a break and a snack to refill your tank and check out the competition, then you're off for another run ...

Design and Equipment using traditional racing motifs

With the Racer Slide Klarer Freizeitanlagen AG brings true innovation to the water slide market offering the choice between open or enclosed slides with three lanes as well as start and finish areas. The Racer Slide also includes racetrack-style start lights and time-keeping displays. A motorsports décor with checkered flag motif at the finish line completes the look.



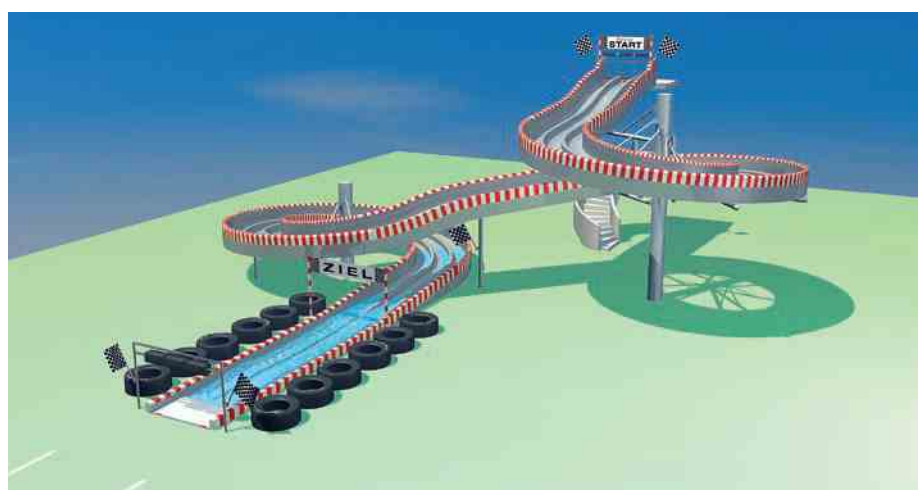
The newest attraction at the water park in Oberentfelden, Switzerland: The Racer Slide, the highlight of the 2012 water park season.

Straight track or Carrera?

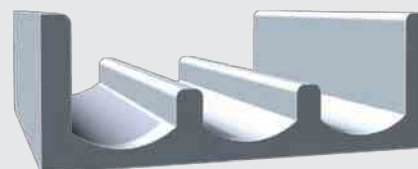
The Racer Slide offers a wide range of possible tracks: the straight track guarantees high-speed neck and neck sliding competitions; the figure-eight track brings the Carrera model racing tracks of childhood to mind; just like back then, the twists and turns make it impossible to say who will come out ahead! The combination of straight track and figure-eight elements gives the slider a curve-filled adventure. Precise planning and construction ensure the uniform length of all three lanes.

Maximum capacity delivered in a minimum of space

In addition to the general increase in attractiveness afforded by the Racer Slide, the compact design and combination of the three tracks can accommodate approximately 540 people per hour. The time-keeping feature encourages competition among sliders and keeps them coming back for the next attempt to break the latest daily record.



Racer Slide – Specifications



Dimensions	225 x 80 cm
Capacity	540 Pers./Hr.
Water Volume	270 m ³ /h
Incline	10 %
Age Requirement	Over 6 years
Specials	<ul style="list-style-type: none"> • Start lights • Time-keeping with digital display • Traditional racing design • A checkered flag marks the finish line

The result is increased activity in the slide area and free spaces in other areas. Water park operators can even organize Racer Slide tournaments with multiple rounds and prizes for the winners.

Imagine the possibilities! You can create your own personalized Racer Slide that will offer your guests the ultimate water slide racing experience.

Renovation and Modernization Two Important Aspects

The renovation and modernization of leisure facilities is becoming more and more important. Energy efficiency and increased attractiveness are significant issues that directly correlate with cost-cutting measures and increased sales.

Renovation saves Energy costs

Energy costs are one of the primary operating expenses for leisure facilities. Improving energy efficiency protects the environment and reduces costs. Thermal insulation from Klarer collection of products can play a decisive role in energy savings.

The following calculation shows how much can be saved:

A 100m-long tube-style water slide with a diameter of 120cm, in operation for 12 hours per day at a water temperature of 27°C uses 240.333 kWh of electricity annually. The same water slide with insulation and an outer shell uses only 8.085 kWh annually. This is a savings of over 96%. Another positive side-effect of this kind of thermal insulation is noticeable noise reduction. With such considerable energy savings, the costs of the insulation and outer shell pay for themselves quickly.

We look forward to the opportunity to provide you with an individualized offer for thermal insulation of your facility including an amortization calculation.

Modernizing increases attractiveness

In order for a leisure facility to remain competitive long-term it must remain attractive and offer modern attractions. Water slides are proven to increase the attractiveness of any leisure facility, drawing visitors from an even larger area.

However, maintaining this level of attractiveness requires the water slides to be new and in good condition. Especially younger visitors quickly lose interest in older slides that have past their prime.

An increase in attractiveness can already be achieved with a modest investment. The existing course with its foundations and steel supports can be reused and fitted with a new type of water slide.

The possibilities are endless! We look forward to visiting your facility to discuss your improvement potential.



Example of the modernization of a water slide park in Olten, Switzerland. Existing foundations and steel supports were re-used for the new tracks. The previous 40m open slide was transformed into a 75m enclosed tube slide; a new attraction with an excellent cost-value ratio.

Klarer Freizeitanlagen AG
CH-8215 Hallau
Switzerland
Phone +41 52 687 06 06
Telefax +41 52 687 06 00
klarer@klarer.com
www.klarer.com

